

# Schedule 1

## Item 1 Description of Agreement Area

### A. External boundary description

The agreement area covers all the land and waters within Lot 1 on SM15 (Avalon Pastoral Holding) and Lot 667 on PH1321 (Mt Lookout Pastoral Holding) and the portions of Lot 1510 on SP171920 (Cerito Pastoral Holding) and Lot 3540 on PH2135 (Rosetta Creek Pastoral Holding) which fall within the external boundary of native title determination application QUD6230/98 Jangga People (QC98/10) as accepted for registration on 19 October 2004, being an area southwest of a line defined as:

Lot 1510 on SP171920 and Lot 3540 on PH2135

- Commencing at a point at Longitude 147.356993° East Latitude 20.805879° South, being a point on the northeast boundary of the QUD6230/98 Jangga People (QC98/10) Native Title Determination Application and extending generally southeast along that native title determination application boundary passing through the following coordinate points:

Longitude ° (East)	Latitude ° (South)
147.382493	20.819079
147.410820	20.832650
147.432825	20.845989
147.454215	20.859891
147.471947	20.870901
147.489063	20.882476
147.511086	20.895803
147.531275	20.908541
147.549622	20.921262
147.566109	20.936257
147.585072	20.950124
147.602206	20.962258
147.615058	20.971501
147.624228	20.979574
147.632740	20.993365
147.641870	21.007159
147.660824	21.025023
147.677332	21.041151
147.695697	21.056717
147.711610	21.071122
147.727536	21.084380
147.744091	21.099903
147.761195	21.118916
147.773438	21.131577
147.791196	21.149991

147.811556	21.167020
147.829828	21.183967

Lot 1 on SM15 and Lot 667 on PH1321

- Entire Lot

#### Notes

##### Data Reference and source

- Agreement boundary data compiled by National Native Title Tribunal.
- Amended native title determination application QUD6230/98 Jangga People (QC98/10) as accepted for registration on 19 October 2004.
- Cadastre data sourced from the Department of Natural Resources and Mines, Qld (March 2012).
- Rivers/Creeks where available are based on Casement data sourced from Department of Natural Resources and Mines, Qld (1 February, 2012) – *else* Topographic vector data is © Commonwealth of Australia (Geoscience Australia) 2003.
- State borders data sourced from Geoscience Australia (1998).
- Localities data is © Commonwealth of Australia (Geoscience Australia) 2001.

##### Reference datum

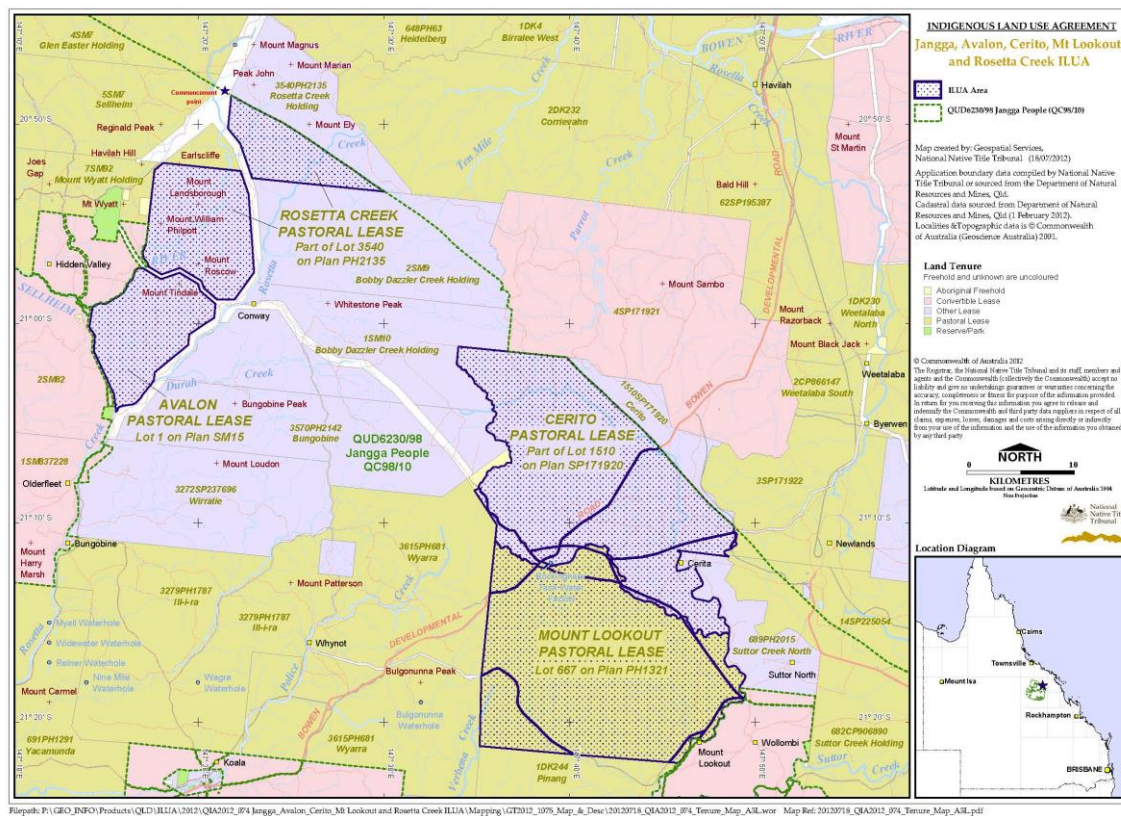
Geographical coordinates have been provided by the NNTT Geospatial Services and are referenced to the Geocentric Datum of Australia 1994 (GDA94), in decimal degrees and are based on the spatial reference data acquired from the various custodians at the time.

##### Use of Coordinates

Where coordinates are used within the description to represent cadastral or topographical boundaries or the intersection with such, they are intended as a guide only. As an outcome to the custodians of cadastral and topographic data continuously recalculating the geographic position of their data based on improved survey and data maintenance procedures, it is not possible to accurately define such a position other than by detailed ground survey.

Prepared by Geospatial Services, National Native Title Tribunal (18 July 2012).

**B. Map**



**Item 3 Description of Lease**

- Term Lease 0/232176 comprising Lot 1 on CP SM15 commonly known as Avalon
- Term Lease 0/232169 comprising Lot 1510 on SP171920 commonly known as Cerito
- Pastoral Holding 5/667 comprising Lot 667 on CP PH1321 commonly known as Mount Lookout
- Term Lease 0/232171 comprising Loy 3540 on CP PH2135 commonly known as Rosetta Creek

**Item 4 Description of Lessee**

Edward Peter Mason, Mora Ellen Mason and Valda Ann Mason